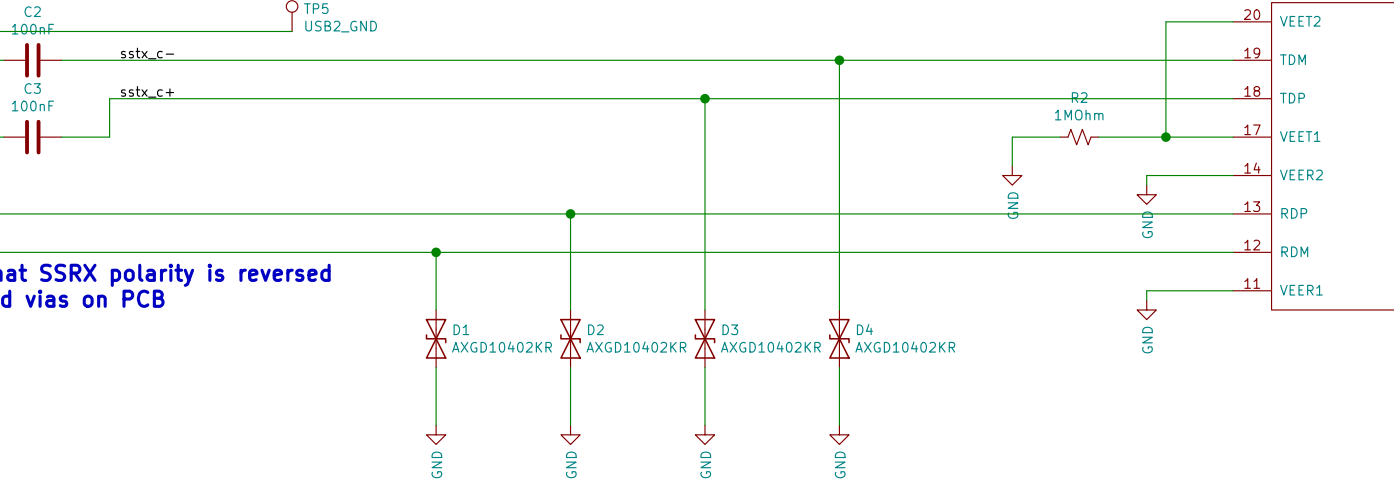
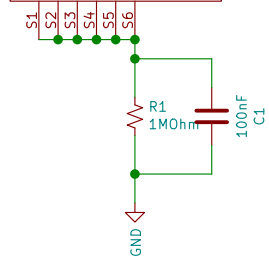


Note that SSRX polarity is reversed to avoid vias on PCB



Sheet: /		Date:	
File: sfp2usb.sch		Rev: RevA	
<b>Title: SFP+ to SuperSpeed USB adapter</b>		Id: 1/1	
Size: A4	KiCad E.D.A. kicad 5.1.4-e60b26684ubuntu18.04.1		